

Valvole di sicurezza | Safety valves

Temperatura d'esercizio / Working temperature: 0 - 110°C (solare/solar 140°C)

Pressione massima d'esercizio / Max working pressure: 10 bar

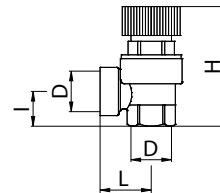
Sovrapressione apertura / Opening overpressure: 10%

Scarto di chiusura / Closing differential: 20%

Tolleranza / Tolerance: 10%

Corpo in ottone stampato / Body in forged brass

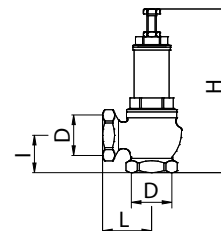
Filetti / Threads: ISO 228

 Costruite nel rispetto dei requisiti essenziali di sicurezza dettati dalla Direttiva Europea 2014/68/EU (PED).
 Made in accordance with the safety requirements laid down in European Directive 2014/68/EU (PED).

 Valvola di sicurezza
 attacco femmina

*Safety valve, female
 connection*
*Válvula de seguridad,
 empalme hembra*

447B

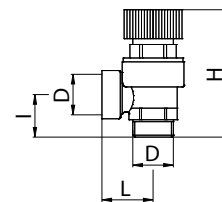
Code	Version	Size (D)	Smooth	D1	H	I	L	€	Pack
447B0004A1	1,5 BAR	1/2"	●	-	62	18	25	6,03	10
447B000401	1,8 BAR	1/2"	●	-	62	18	25	6,03	10
447B0004A2	2 BAR	1/2"	●	-	62	18	25	6,03	10
447B000402	2,5 BAR	1/2"	●	-	62	18	25	6,03	10
447B000403	3 BAR	1/2"	●	-	62	18	25	6,03	10
447B000404	4 BAR	1/2"	●	-	62	18	25	6,03	10
447B000406	6 BAR	1/2"	●	-	62	18	25	6,03	10
447B000407	7 BAR	1/2"	●	-	62	18	25	6,03	10
4474B00408	8 BAR	1/2"	●	-	70	18	25	10,07	10
4474B00410	10 BAR	1/2"	●	-	70	18	25	10,07	10
447B0005A1	1,5 BAR	3/4"	●	-	80	24	30	10,32	10
447B000501	1,8 BAR	3/4"	●	-	80	24	30	10,32	10
447B000502	2,5 BAR	3/4"	●	-	80	24	30	10,32	10
447B000503	3 BAR	3/4"	●	-	80	24	30	10,32	10
447B000504	4 BAR	3/4"	●	-	80	24	30	10,32	10
447B000506	6 BAR	3/4"	●	-	80	24	30	10,32	10
447B000507	7 BAR	3/4"	●	-	80	24	30	10,32	10
447B000508	8 BAR	3/4"	●	-	80	25	32	13,34	10
447B000510	10 BAR	3/4"	●	-	80	25	32	13,34	10
447B0006A1	1,5 BAR	1"	●	-	112	30	38	24,37	2
447B000602	2,5 BAR	1"	●	-	112	30	38	24,37	2
447B000603	3 BAR	1"	●	-	112	30	38	24,37	2
447B000604	4 BAR	1"	●	-	112	30	38	24,37	2
447B000606	6 BAR	1"	●	-	112	30	38	24,37	2
447B000607	7 BAR	1"	●	-	112	30	38	24,37	2



Code	Version	Size (D)	Smooth	D1	H	I	L	€	Pack
447B000706	6 BAR	1 1/4"	●	-	191	45	54	81,70	1
4474B00710	10 BAR	1 1/4"	●	-	191	45	54	81,70	1
447B000806	6 BAR	1 1/2"	●	-	207	47	60	103,65	1
447B000810	10 BAR	1 1/2"	●	-	207	47	60	103,65	1
447B000906	6 BAR	2"	●	-	233	60	72	144,88	1
447B000910	10 BAR	2"	●	-	233	60	72	144,88	1



Valvola di sicurezza
attacco maschio
*Safety valve, male
connection*
*Válvula de seguridad,
empalme macho*

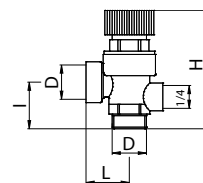


447

Code	Version	Size (D)	Smooth	D1	H	I	L	€	Pack
44700004A1	1,5 BAR	1/2"	●	-	65	22	25	6,19	10
4470000402	2,5 BAR	1/2"	●	-	65	22	25	6,19	10
4470000403	3 BAR	1/2"	●	-	65	22	25	6,19	10
4470000406	6 BAR	1/2"	●	-	65	22	25	6,19	10
4470000407	7 BAR	1/2"	●	-	65	22	25	6,19	10
4474000408	8 BAR	1/2"	●	-	80	25	24	10,66	10
4474000410	10 BAR	1/2"	●	-	80	25	24	10,66	10
4470000502	2,5 BAR	3/4"	●	-	88	31	32	11,26	10
4470000503	3 BAR	3/4"	●	-	88	31	32	11,26	10
4470000506	6 BAR	3/4"	●	-	88	31	32	11,26	10
4470000507	7 BAR	3/4"	●	-	88	31	32	11,26	10



Valvola di sicurezza
attacco maschio con
attacco per manometro
*Safety valve male
connection, with
manometer connection*
*Válvula de seguridad
empalme macho con
empalme para manómetro*

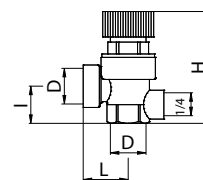


447C

Code	Version	Size (D)	Smooth	D1	H	I	L	€	Pack
447C000402	2,5 BAR	1/2"	●	-	65	22	25	7,62	10
447C000403	3 BAR	1/2"	●	-	65	22	25	7,62	10
447C000406	6 BAR	1/2"	●	-	65	22	25	7,62	10



Valvola di sicurezza
attacco femmina con
attacco per manometro
*Safety valve female
connection, with
manometer connection*
*Válvula de seguridad
hembra con empalme
para manómetro*



447D

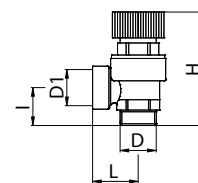
Code	Version	Size (D)	Smooth	D1	H	I	L	€	Pack
447D000402	2,5 BAR	1/2"	●	-	62	18	25	7,37	10
447D000403	3 BAR	1/2"	●	-	62	18	25	7,37	10
447D000406	6 BAR	1/2"	●	-	62	18	25	7,37	10



Valvola di sicurezza con attacco a compressione
Compression safety valve
Válvula de seguridad a compresion


447F

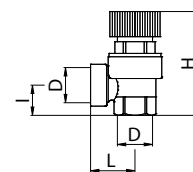
Code	Version	Size (D)	Smooth	D1	H	I	L	€	Pack
447F0004A1	1,5 BAR	1/2"	●	15	22	-	31	9,15	10
447F000402	2,5 BAR	1/2"	●	15	22	-	31	9,15	10
447F000410	10 BAR	1/2"	●	15	25	-	31	10,50	10



Valvola di sicurezza per impianti solari attacco femmina
Safety valve for solar systems, female connection
Válvula de seguridad para sistemas de solar empalme hembra


4473B

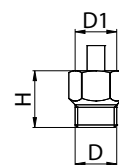
Code	Version	Size (D)	Smooth	D1	H	I	L	€	Pack
4473B00404	4 BAR	1/2"	●	-	69	24	35	11,73	10
4473B00406	6 BAR	1/2"	●	-	69	24	35	11,73	10



Valvola d'isolamento
Mini isolated valve
Válvula de aislamiento

420

Code	Version	Size (D)	Smooth	D1	H	I	L	€	Pack
4200030300		3/8"	●	3/8"	23	-	-	1,27	50
4200040300		1/2"	●	3/8"	24	-	-	2,20	50
4200040400		1/2"	●	1/2"	25	-	-	2,08	50



Valvola di sicurezza per scaldabagno
Safety valve for boiler
Válvula de seguridad calentador

453

Code	Version	Size (D)	Smooth	D1	H	I	L	€	Pack
4530000485	8,5 BAR	1/2"	●	-	40	-	39	3,92	20

