

Valvole sfiato automatiche e manuali | Automatic and manual air discharge valves

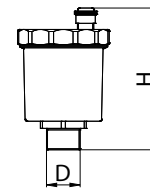
Temperatura massima d'esercizio / Max working temperature: 110°C (solare/solar: 150°C)

Pressione massima d'esercizio / Max working pressure: 10 bar

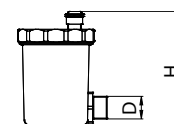
Filetti / Threads: ISO 228

Galleggiante / Float: PP

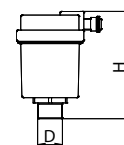
Fluidi ammessi: Acqua (percentuale massima di glicole: 50%) / Allowed fluids: water (Glycole max percentage: 50%)


Valvola sfiato automatica
Automatic air discharge valve
Válvula de desahogo automática
419

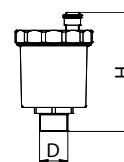
Code	Version	Size (D)	Smooth	D1	H	I	L	€	Pack
4190000300		3/8"	●	-	70	-	-	5,72	24
4190N00300		3/8"	●	-	70	-	-	6,71	24
4190000400		1/2"	●	-	70	-	-	5,80	24
4190N00400		1/2"	●	-	70	-	-	7,19	24


Valvola a sfiato automatica con attacco laterale
Automatic air discharge valve with side connection
Purgador de vaciado automatico con conexion lateral
419B

Code	Version	Size (D)	Smooth	D1	H	I	L	€	Pack
419B000300		3/8"	●	-	61	-	-	7,32	24
419BN00300		3/8"	●	-	61	-	-	7,77	24
419B000400		1/2"	●	-	61	-	-	7,40	24
419BN00400		1/2"	●	-	61	-	-	7,84	24


Valvola a sfiato automatica con scarico laterale
Automatic air discharge valve with side drain
Purgador de vaciado automatico con conexion lateral
419L

Code	Version	Size (D)	Smooth	D1	H	I	L	€	Pack
419L000300		3/8"	●	-	58	-	-	6,62	25
419LN00300		3/8"	●	-	58	-	-	6,67	25
419L000400		1/2"	●	-	58	-	-	6,84	25
419LN00400		1/2"	●	-	58	-	-	6,92	25


Valvola sfiato automatica per impianti solari
Automatic air discharge valve for solar systems
Válvula de desahogo automática para sistemas solar
419 S

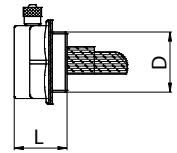
Code	Version	Size (D)	Smooth	D1	H	I	L	€	Pack
419S000300		3/8"	●	-	70	-	-	13,82	24
419S000400		1/2"	●	-	70	-	-	13,82	24



Tappo radiatore con valvola di sfogo disponibile con filetto destro (417D) o sinistro (417S)

Radiator plug with discharge valve available with right (417D) or left thread (417S)

Tapon para radiador con valvula de desahogo disponible derecho (417D) e izquierdo (417S)



417

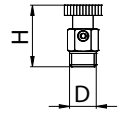
Code	Version	Size (D)	Smooth	D1	H	I	L	€	Pack
417D000600	Dx/RIGHT	1"	●	-	-	-	-	8,15	10
417S000600	Sx/LEFT	1"	●	-	-	-	-	8,15	10



Valvolina a sfiao aria cromata con OR, maniglia in ottone

Air discharge valve with OR and brass handle

Válvula de desahogo de aire cromada con OR, manija de latón



418

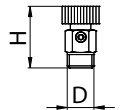
Code	Version	Size (D)	Smooth	D1	H	I	L	€	Pack
4180C00100		1/8"	●	-	24	-	-	1,19	100
4180C00200		1/4"	●	-	26	-	-	1,21	100
4180C00300		3/8"	●	-	25	-	-	1,40	100
4180C00400		1/2"	●	-	25	-	-	2,15	50



Valvolina sfiao aria cromata con anello in PTFE, maniglia in plastica

Air discharge valve with plastic handle

Válvula de desahogo de aire cromada, manija de plástico



418P

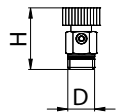
Code	Version	Size (D)	Smooth	D1	H	I	L	€	Pack
4180C0010P		1/8"	●	-	25	-	-	0,74	100
4180C0020P		1/4"	●	-	25	-	-	0,83	100
4180C0030P		3/8"	●	-	25	-	-	1,07	100
4180C0040P		1/2"	●	-	25	-	-	1,46	50



Valvolina a sfiao aria cromata con anello in PTFE, maniglia in plastica

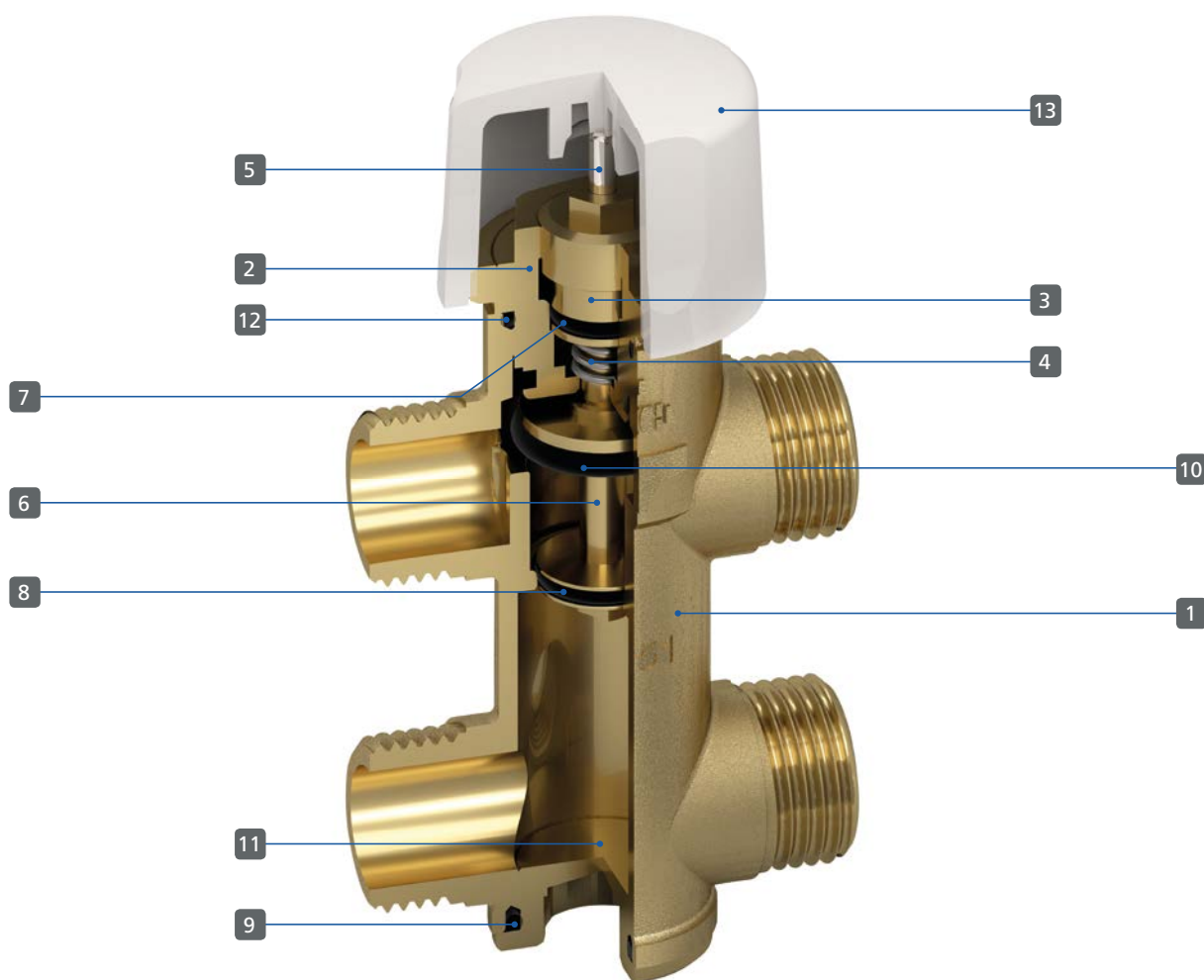
Air discharge valve with PTFE sealing and plastic handle

Válvula de desahogo de aire cromada con anillo en PTFE, manija de plástico



418T

Code	Version	Size (D)	Smooth	D1	H	I	L	€	Pack
4180C0020T		1/4"	●	-	26	-	-	1,12	100
4180C0030T		3/8"	●	-	26	-	-	1,46	100

Valvole di zona - Fancoil | Fancoil-zone valves

Scheda materiali | Materials

Denominazione	Pz.	Materiale
1 Corpo / Body	1	OTTONE / BRASS CW617N
2 Vitone / Screw valve	1	OTTONE / BRASS CW614N
3 Ghiera otturatore / Ring nut	1	OTTONE / BRASS CW614N
4 Molla / Spring	1	ACCIAIO INOX / STAINLESS STEEL ANSI 302
5 Asta di spinta / Pin	1	OTTONE / BRASS CW614N
6 Pistone / Piston	1	OTTONE / BRASS CW614N
7 O-ring / O-ring	1	EPDM
8 O-ring / O-ring	1	EPDM
9 O-ring / O-ring	1	EPDM
10 O-ring / O-ring	1	EPDM
11 Tappo / Plug	1	OTTONE / BRASS CW614N
12 O-ring / O-ring	1	EPDM
13 Cappuccio / Cap	1	ABS

• Caratteristiche generali / General informations

Pressione massima differenziale / Maximum differential pressure: 1 bar

Intervallo di temperatura / Temperature range: 2°C-120°C

Attacco per attuatore / Actuator attachment: 30x1,5

Corsa / Stroke: 3mm

Abbinabili agli attuatori / Available with actuators: art.350-351

Fluidi ammessi: Acqua (percentuale massima di glicole: 50%) / Allowed fluids: water (Glycole max percentage: 50%)

Le valvole per fan coil sono utilizzate per intercettare, deviare o miscelare i fluidi termovettori su impianti di riscaldamento e di raffreddamento. Le valvole a 2 vie serie 662 vengono utilizzate per operazioni di apertura e chiusura, mentre le valvole a tre e quattro vie della serie 663-664 possono essere utilizzate come deviatrici o miscelatrici. Quando l'asta è premuta, la valvola è chiusa.

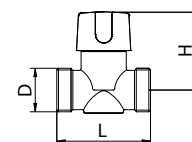
The operation of the fan coil valve is done by the automatic movement of the plug which shut-offs the heat-transfer fluid. The 2-way valve 662 IS used for shutting off operations, while the 3 and 4-way 663/664 are used for mixing and diverting the heat-transfer fluid to a heating or air conditioning system. When the spindle is pressed in, the valve is closed



Valvola di zona a 2 vie per fan coil

2 ways zone/fan coil valve

Válvula de zona 2 vías para fan coil



662V

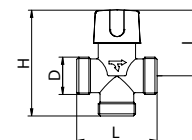
Code	Version	Size (D)	Smooth	D1	H	I	L	€	Pack
662V000400		1/2"	●	-	48	-	53	8,87	1
662V000500		3/4"	●	-	48	-	56	8,99	1
662V000600		1"	●	-	52	-	65	13,60	1



Valvola di zona a 3 vie per fan coil

3 ways zone/fan coil valve

Válvula de zona 3 vías para fan coil



663V

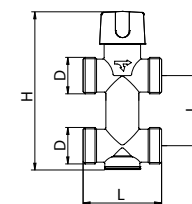
Code	Version	Size (D)	Smooth	D1	H	I	L	€	Pack
663V000400		1/2"	●	-	78	48	53	11,77	1
663V000500		3/4"	●	-	76	48	56	12,06	1
663V000600		1"	●	-	87	52	65	17,01	1



Valvola di zona a 4 vie per fan coil

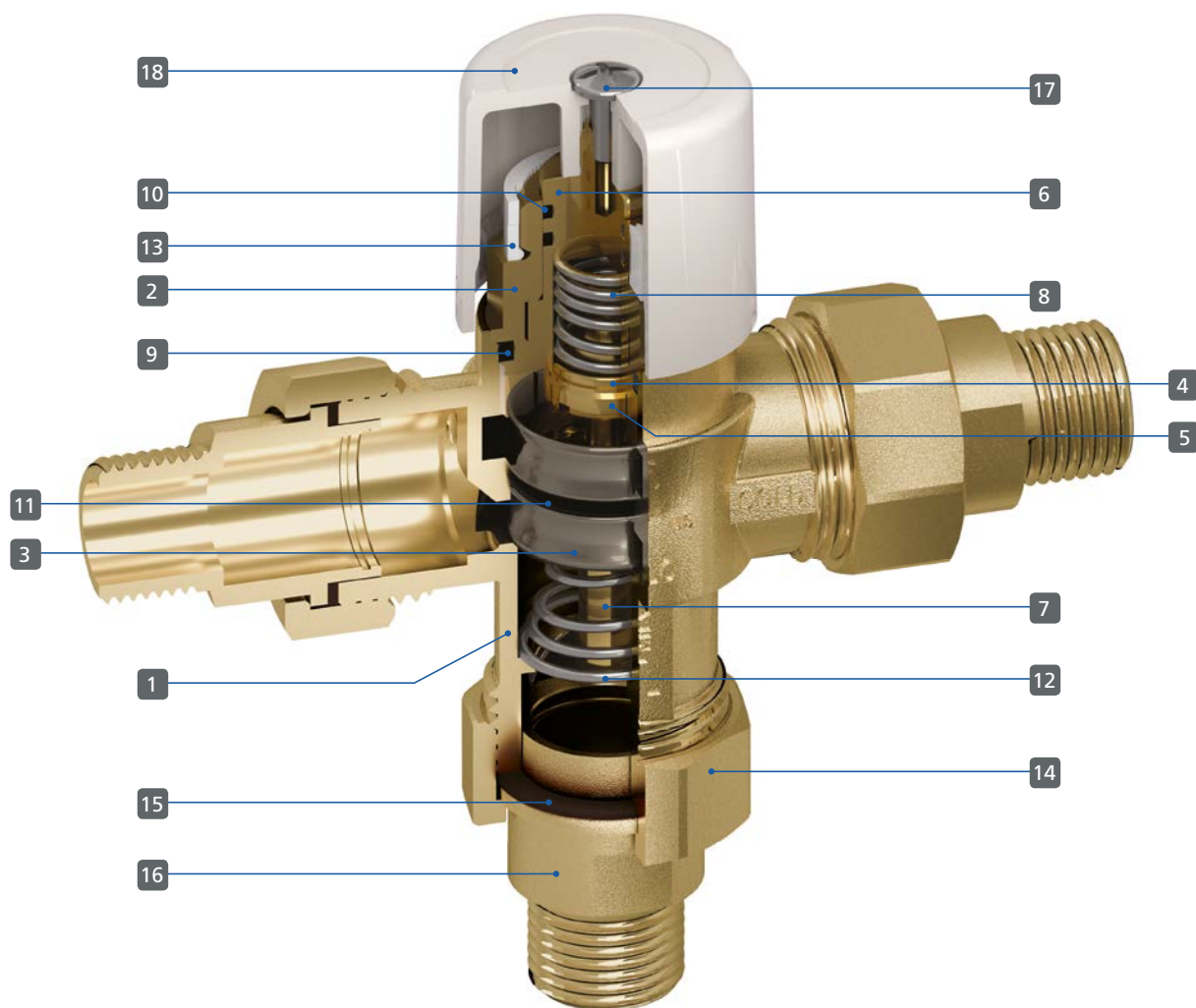
4 ways zone/fan coil valve

Válvula de zona 4 vías para fan coil



664V

Code	Version	Size (D)	Smooth	D1	H	I	L	€	Pack
664AV000400		1/2"	●	-	102	40	53	14,99	1
664AV000500		3/4"	●	-	116	40	56	15,29	1
664V000600		1"	●	-	124	50	65	21,36	1

Valvole miscelatrici termostatiche | Thermostatic mixing valves

Caratteristiche tecnico/costruttive generali

Denominazione	Pz.	Materiale	Denominazione	Pz.	Materiale
1 Corpo / Body	1	OTTONE / BRASS CW510L	10 O-ring / O-ring	2	EPDM
2 Vitone / Head screw	1	OTTONE / BRASS CW510L	11 O-ring / O-ring	1	EPDM
3 Pistone / Piston	1	OTTONE / BRASS CW510L	12 Molla conica / Conical spring	1	ACCIAIO INOX / STAINLESS STEEL ANSI 302
4 Pistoncino / Small piston	1	OTTONE / BRASS CW510L	13 Anello / Ring	1	PLASTIC
5 Ghiera / Ring	1	OTTONE / BRASS CW510L	14 Dado / Nut	3	OTTONE / BRASS CW617N
6 Asta / Stem	1	OTTONE / BRASS CW510L	15 Guarnizione / Gasket	3	EPDM
7 Bulbo / Bulb	1	-	16 Codolo / Union	3	OTTONE / BRASS CW617N
8 Molla / Spring	1	ACCIAIO INOX / STAINLESS STEEL ANSI 302	17 Vite / Screw	1	ACCIAIO / STEEL
9 O-ring / O-ring	1	EPDM	18 Volantino / Handle	1	ABS

• Caratteristiche generali / General informations

Pressione minima d'esercizio / Minimum working pressure: 2 bar

Pressione massima d'esercizio / Maximum working pressure: 10 bar

Temperatura minima acqua fredda in ingresso / Minimum cold inlet temperature: 4°C

Temperatura massima acqua calda in ingresso / Maximum hot inlet temperature: 85°C (solare/solar: 110°C)

Intervallo di temperatura miscelata / Mixed outlet temperature: 35°C-55°C

Filetti / Threads: ISO 228

Fluidi ammessi: Acqua (percentuale massima di glicole: 50%) / Allowed fluids: water (Glycole max percentage: 50%)

• Applicazioni / Applications

Installare al boiler per impostare la temperatura massima per tutto il Sistema / Install at water heater to set the maximum temperature for entire system.

Impostare la temperatura massima per gli impianti radianti a pavimento / Set the maximum temperature for radiant floor installations.

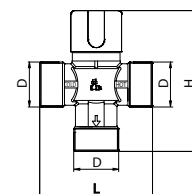
Punto di utilizzo: imposta la temperatura massima per una singola utenza o più utenze / Point of use: Set the maximum temperature of each fixture individually or group



Valvola miscelatrice
termostatica a 3 vie con
filetto maschio

*3 ways thermostatic
mixing valve with male
connection*

*Válvula mezcladora
termostática 3 vías con
empalme macho*



655

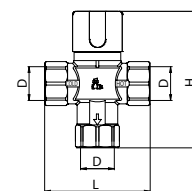
Code	Version	Size (D)	Smooth	D1	H	I	L	€	Pack
6550000600		1"	●	-	99	-	75	45,15	1



Valvola miscelatrice
termostatica a 3 vie con
filetto femmina

*3 ways thermostatic
mixing valve with
female connection*

*Válvula mezcladora
termostática 3 vías con
empalme hembra*



650

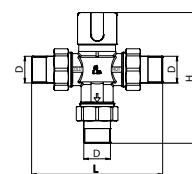
Code	Version	Size (D)	Smooth	D1	H	I	L	€	Pack
6500000400		1/2"	●	-	115	-	78	46,70	1
6500000500		3/4"	●	-	115	-	78	46,70	1
6500000600		1"	●	-	115	-	90	48,39	1



Valvola miscelatrice
termostatica a 3 vie
con bocchettone maschio

*3 ways thermostatic
mixing valve with
male pipe union*

*Válvula mezcladora
termostática 3 vías
con boquilla macho*



652

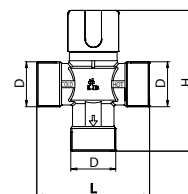
Code	Version	Size (D)	Smooth	D1	H	I	L	€	Pack
6520000400		1/2"	●	-	139	-	154	55,40	1
652N000400	CHECK VALVES	1/2"	●	-	139	-	154	61,42	1
6520000500		3/4"	●	-	138	-	135	55,40	1
652N000500	CHECK VALVES	3/4"	●	-	138	-	135	61,42	1
6520000600		1"	●	-	146	-	153	62,55	1
652N000600	CHECK VALVES	1"	●	-	146	-	153	68,75	1



Valvola miscelatrice termostatica a 3 vie con filetto maschio per impianti solari

3 ways thermostatic mixing valve with male connection for solar system

Válvula mezcladora termostática 3 vías con empalme macho para instalaciones solar


655 S

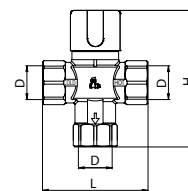
Code	Version	Size (D)	Smooth	D1	H	I	L	€	Pack
655S000600		1"	●	-	99	-	75	48,90	1



Valvola miscelatrice termostatica a 3 vie con filetto femmina per impianti solari

3 ways thermostatic mixing valve with female connection for solar system

Válvula mezcladora termostática 3 vías con empalme hembra para instalaciones solar


653

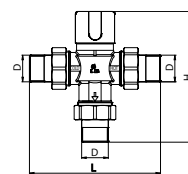
Code	Version	Size (D)	Smooth	D1	H	I	L	€	Pack
6530000400		1/2"	●	-	115	-	78	49,59	1
6530000500		3/4"	●	-	115	-	78	49,59	1
6530000600		1"	●	-	115	-	90	51,68	1



Valvola miscelatrice termostatica a 3 vie con bocchettone maschio per impianti solari

3 ways thermostatic mixing valve with male pipe union for solar system

Válvula mezcladora termostática 3 vías con boquilla macho para instalaciones solar


654

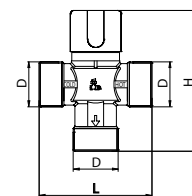
Code	Version	Size (D)	Smooth	D1	H	I	L	€	Pack
6540000400		1/2"	●	-	139	-	154	59,40	1
654N000400	CHECK VALVES	1/2"	●	-	139	-	154	63,25	1
6540000500		3/4"	●	-	138	-	135	59,40	1
654N000500	CHECK VALVES	3/4"	●	-	138	-	135	63,25	1
6540000600		1"	●	-	146	-	153	65,10	1
654N000600	CHECK VALVES	1"	●	-	146	-	153	72,51	1



Valvola miscelatrice termostatica a 3 vie con filetto maschio per impianti solari - alta temperatura

3 ways thermostatic mixing valve with male connection for solar system - high temperature

Válvula mezcladora termostática 3 vías con empalme macho para instalaciones solar - elevada temperatura



655HT

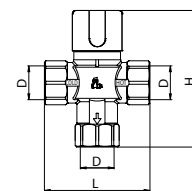
Code	Version	Size (D)	Smooth	D1	H	I	L	€	Pack
655HT00600		1"	●	-	99	-	75	49,63	1



Valvola miscelatrice termostatica a 3 vie con filetto femmina per impianti solari - alta temperatura

3 ways thermostatic mixing valve with female connection for solar system - high temperature

Válvula mezcladora termostática 3 vías con empalme hembra para instalaciones solar - elevada temperatura



657

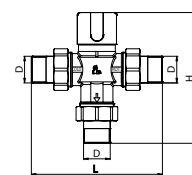
Code	Version	Size (D)	Smooth	D1	H	I	L	€	Pack
6570000400		1/2"	●	-	115	-	78	50,33	1
6570000500		3/4"	●	-	115	-	78	50,33	1
6570000600		1"	●	-	115	-	90	52,46	1



Valvola miscelatrice termostatica a 3 vie con bocchettone maschio per impianti solari - alta temperatura

3 ways thermostatic mixing valve with male pipe union for solar system - high temperature

Válvula mezcladora termostática 3 vías con boquilla macho para instalaciones solar - elevada temperatura



658

Code	Version	Size (D)	Smooth	D1	H	I	L	€	Pack
6580000400		1/2"	●	-	139	-	154	60,29	1
658N000400	CHECK VALVES	1/2"	●	-	139	-	154	64,20	1
6580000500		3/4"	●	-	138	-	135	60,29	1
658N000500	CHECK VALVES	3/4"	●	-	138	-	135	64,20	1
6580000600		1"	●	-	146	-	153	66,07	1
658N000600	CHECK VALVES	1"	●	-	146	-	153	73,60	1

Connessioni per valvole miscelatrici termostatiche e valvole di zona Thermostatic mixing valves and zone valves connections



Dado e codolo con filetto maschio ISO 228
Nut and tailpiece with ISO 228 male thread

100

Code	Version	Size (D)	Smooth	D1	H	I	L	€	Pack
100000400		1/2"	●	1"	-	-	42	5,30	1
10000040C	CHECK VALVES	1/2"	●	1"	-	-	42	7,00	1
100000500		3/4"	●	1"	-	-	35	5,30	1
10000050C	CHECK VALVES	3/4"	●	1"	-	-	35	7,00	1
100000600		1"	●	1"	-	-	46	6,98	1
10000060C	CHECK VALVES	1"	●	1"	-	-	46	8,69	1



Dado e codolo con filetto maschio NPT
Nut and tailpiece with NPT male thread

100/1

Code	Version	Size (D)	Smooth	D1	H	I	L	€	Pack
100000410		1/2"	●	1"	-	-	42	5,95	1
10000041C	CHECK VALVES	1/2"	●	1"	-	-	42	7,90	1
100000510		3/4"	●	1"	-	-	35	5,95	1
10000051C	CHECK VALVES	3/4"	●	1"	-	-	35	7,90	1
100000610		1"	●	1"	-	-	46	7,78	1
10000061C	CHECK VALVES	1"	●	1"	-	-	46	9,66	1



Dado e codolo a saldare
Nut and tailpiece sweat

100/S

Code	Version	Size (D)	Smooth	D1	H	I	L	€	Pack
1000004S0		1/2"	●	1"	-	-	40	5,83	1
1000004SC	CHECK VALVES	1/2"	●	1"	-	-	40	7,71	1
1000005S0		3/4"	●	1"	-	-	46	6,95	1
1000005SC	CHECK VALVES	3/4"	●	1"	-	-	46	8,86	1
1000006S0		1"	●	1"	-	-	49	8,55	1
1000006SC	CHECK VALVES	1"	●	1"	-	-	49	10,42	1



Dado e codolo a pressare
Nut and tailpiece press

100/P

Code	Version	Size (D)	Smooth	D1	H	I	L	€	Pack
10000004PO		1/2"	●	1"	-	-	49	6,73	1
10000004PC	CHECK VALVES	1/2"	●	1"	-	-	49	8,61	1
10000005PO		3/4"	●	1"	-	-	53	9,25	1
10000005PC	CHECK VALVES	3/4"	●	1"	-	-	53	11,27	1
10000006PO		1"	●	1"	-	-	53	9,98	1
10000006PC	CHECK VALVES	1"	●	1"	-	-	53	11,85	1



Dado e codolo
PEX 1807
*Nut and tailpiece
PEX 1807*

100/X

Code	Version	Size (D)	Smooth	D1	H	I	L	€	Pack
10000004X0		1/2"	●	1"	-	-	43	6,04	1
10000004XC	CHECK VALVES	1/2"	●	1"	-	-	43	7,93	1
10000005X0		3/4"	●	1"	-	-	43	6,04	1
10000005XC	CHECK VALVES	3/4"	●	1"	-	-	43	7,93	1



Portatermometro con
termometro e dado
girevole
*Thermometer holder
with thermometer and
swivel nut*

297M

Code	Version	Size (D)	Smooth	D1	H	I	L	€	Pack
297M000600		1"	●	1"	-	-	60	13,35	1

Gruppi di sicurezza per riscaldatori ad accumulo | Safety groups for hot water heaters

Pressione massima d'esercizio / Max working pressure: 10 bar
 Temperatura d'esercizio / Working temperature: 0°C (escluso ghiaccio / excluding ice) - 120°C
 Taratura valvola di scarico / Safety relief valve pressure setting: 7 bar
 Potenza massima del riscaldatore / Max water heater output: 10 kw
 Utilizzabile con sifone orientabile / Usable with adjustable bottle trap

I gruppi di sicurezza sono prodotti utilizzati nei sistemi con scaldacqua ad accumulo. La loro funzione principale è quella di prevenire pressioni eccessivamente elevate all'interno dei riscaldatori ad accumulo, evitare il ritorno dell'acqua calda nella rete di alimentazione e di isolare la rete di alimentazione permettendo la manutenzione del bollitore. / Safety groups are products used in water systems with hot water storage heaters. The main function is to prevent exceptionally high pressure in the storage heaters, to prevent backflow of hot water into the water supply network and shut-off the water network for maintenance of the heater system.

Progettato e costruito secondo la Normativa Europea EN1487. Designed and assembled in accordance with European Norm EN1487.



Gruppo di sicurezza angolo con valvola a sfera e ritegno per boiler

Angle safety group with check and ball valve for boiler

Grupo de seguridad angulo para calentadores de agua de acumulación con valvula de bola y retención

458A

Code	Version	Size (D)	Smooth	D1	H	I	L	€	Pack
458A000500		3/4"	●	-	100	-	117	30,70	2



Gruppo di sicurezza dritto con valvola a sfera e ritegno per boiler

Straight safety group with check and ball valve for boiler

Grupo de seguridad recto para calentadores de agua de acumulación con valvula de bola y retención

458D

Code	Version	Size (D)	Smooth	D1	H	I	L	€	Pack
458D000500		3/4"	●	-	97	-	121	25,30	2



Sifone per gruppo di sicurezza per boiler

Plastic bottle trap for safety group for boiler

Sifón para grupo de seguridad para calentadores de agua

2680

Code	Version	Size (D)	Smooth	D1	H	I	L	€	Pack
0268006000		1"	○	-	-	-	-	4,62	1

Valvole di isolamento per scaldacqua | Tankless isolation valves

Pressione massima d'esercizio / Max working pressure: 40 bar
 Temperatura d'esercizio / Working temperature: 0°C (escluso ghiaccio / excluding ice) - 100°C
 Corpo in ottone stampato / Body in forged brass
 Asta anti scoppio / Anti blowing stem

Le valvole di isolamento sono progettate per rendere più semplici le operazioni di pulizia e risciacquo degli scaldacqua. Entrambe le uscite per acqua calda e fredda includono una valvola di chiusura con scarico. / Isolation valves are designed to make easier the flushing and cleaning of the water heaters. Both hot and cold ways include a drain port with a shut off valve.



Valvole di isolamento per scaldacqua NPT FF

NPT FF tankless isolation ball valves

930-931

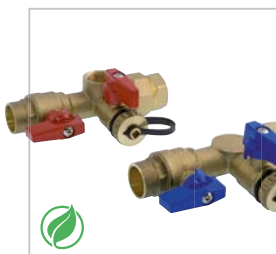
Su richiesta / On request

Code	Version	Size (D)	Smooth	D1	H	I	L	€	Pack
93000005UA		3/4"	●	-	-	-	140	-	1
93100005UE		3/4"	●	-	-	-	140	-	1

La valvola 930 è a 4 vie / Valve 930 is 4 ways

La valvola 931 è a 3 vie / Valve 931 is 3 ways

Le due valvole vengono inscatolate in un kit / The two valves are packed in a single kit



Valvole di isolamento per scaldacqua a saldare

Solder tankless isolation ball valves

933-934

Su richiesta / On request

Code	Version	Size (D)	Smooth	D1	H	I	L	€	Pack
93300005UA		3/4"	●	-	-	-	142	-	1
93400005UE		3/4"	●	-	-	-	142	-	1

La valvola 933 è a 4 vie / Valve 933 is 4 ways

La valvola 934 è a 3 vie / Valve 934 is 3 ways

Le due valvole vengono inscatolate in un kit / The two valves are packed in a single kit

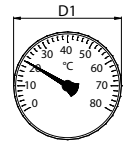
Manometri | Manometers



Termometro bimetallico
Ø 40mm. Scala:
0°- 80°C / 32°-170°F

Bimetallic thermometer
Ø 40mm. Scale:
0°- 80°C / 32°-170°F

Termómetro bimetalico
Ø 40mm. Escala:
0°- 80°C / 32°-170°F



448B

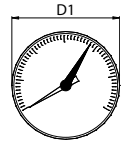
Code	Version	Size (D)	Smooth	D1	H	I	L	€	Pack
448B000000		3/8"	●	40	-	-	-	7,80	1



Manometro Ø 63
attacco posteriore

Manometer Ø 63
back connection

Manómetro Ø 63
empalme posterior



448

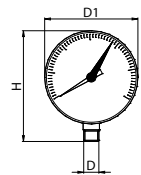
Code	Version	Size (D)	Smooth	D1	H	I	L	€	Pack
4480000206	0-6 BAR	1/4"	●	63	-	-	-	7,80	1
4480000210	0-10 BAR	1/4"	●	63	-	-	-	7,80	1



Manometro con
attacco verticale

Manometer with
vertical connection

Manómetro con
empalme vertical



448V

Code	Version	Size (D)	Smooth	D1	H	I	L	€	Pack
448V000204	0-4 BAR	1/4"	●	63	85	-	-	7,80	1
448V000206	0-6 BAR	1/4"	●	63	85	-	-	7,80	1
448V000210	0-10 BAR	1/4"	●	63	85	-	-	7,80	1

Adattatori per tubo rame | Copper pipe adaptors

Temperatura d'esercizio / Working temperature: 0°C – 100°C
 Pressione massima d'esercizio / Max working pressure: 10 bar



Dado con bicono in gomma per tubo rame e tubo ferro

Brass nut and rubber ring for copper and steel pipe

Tuerca con bicono de goma para tubo de cobre y tubo de hierro

210G÷216G

Code	Version	Size (D)	Smooth	D1	H	I	L	€	Pack
210G04200G		1/2"	●	10	-	-	-	1,35	50
210GN4200G		1/2"	●	10	-	-	-	1,40	50
212G04220G		1/2"	●	12	-	-	-	1,35	50
212GN4220G		1/2"	●	12	-	-	-	1,40	50
214G04240G		1/2"	●	14	-	-	-	1,35	50
214GN4240G		1/2"	●	14	-	-	-	1,40	50
215G04250G		1/2"	●	15	-	-	-	1,35	50
215GN4250G		1/2"	●	15	-	-	-	1,40	50
216GN4260G		1/2"	●	16	-	-	-	2,30	50



Dado cromato lucido con bicono in gomma per tubo rame e tubo ferro

Brass nut and rubber ring polish chrome finishing for copper and steel pipe

Tuerca cromada brillante y junta tórica goma para tubo de cobre y tubo de hierro

212L÷215L

Code	Version	Size (D)	Smooth	D1	H	I	L	€	Pack
212LC4220G		1/2"	●	12	-	-	-	2,13	50
214LC4240G		1/2"	●	14	-	-	-	2,13	50
215LC4250G		1/2"	●	15	-	-	-	2,13	50



Dado con bicono in gomma, Eurocono per tubo rame e tubo ferro

Euroconus brass nut and rubber ring for copper and steel pipe

Tuerca con bicono de goma Eurocono para tubo de cobre y tubo de hierro

210E÷218E

Code	Version	Size (D)	Smooth	D1	H	I	L	€	Pack
210EC5200G		3/4"	●	10	-	-	-	3,19	25
212EC5220G		3/4"	●	12	-	-	-	3,19	25
214EC5240G		3/4"	●	14	-	-	-	3,19	25
215EC5250G		3/4"	●	15	-	-	-	3,19	25
216EC5260G		3/4"	●	16	-	-	-	3,19	25
218EC5280G		3/4"	●	18	-	-	-	3,19	25



Dado con bicono in gomma per tubo rame e tubo ferro

Brass nut and rubber ring for copper and steel pipe

Tuerca con bicono de goma para tubo de cobre y tubo de hierro

215X÷218X

Code	Version	Size (D)	Smooth	D1	H	I	L	€	Pack
215XN02500		24x19	●	15	-	-	-	2,75	50
216XN02600		24x19	●	16	-	-	-	2,75	50
218XN02800		24x19	●	18	-	-	-	2,75	50

Adattatori per tubo multistrato | Multi-layers pipe adaptors

 Temperatura d'esercizio / Working temperature: 0°C – 100°C
 Pressione massima d'esercizio / Max working pressure: 10 bar


Adattatore per tubo multistrato
Multilayer pipe adaptor
 Adaptador para tubo multicapa

219

Code	Version	Size (D)	Smooth	D1	H	I	L	€	Pack
2190000408		1/2"	●	14X2	-	-	-	1,89	50
2190N00408		1/2"	●	14X2	-	-	-	1,95	50
219000040B		1/2"	●	16X1,8	-	-	-	1,89	50
2190N0040B		1/2"	●	16X1,8	-	-	-	1,95	50
2190000403		1/2"	●	16X2	-	-	-	1,89	50
2190N00403		1/2"	●	16X2	-	-	-	1,95	50
2190000405		1/2"	●	16X2,25	-	-	-	1,89	50
2190N00405		1/2"	●	16X2,25	-	-	-	1,95	50



Adattatore cromato lucido per tubo multistrato
Multilayer pipe adaptor polish chrome finishing
 Adaptador cromado lúcido para tubo multicapa

219L

Code	Version	Size (D)	Smooth	D1	H	I	L	€	Pack
219LC00403		1/2"	●	16X2	-	-	-	2,64	50



Adattatore per tubo multistrato tipo Eurocono
Multilayer pipe adaptor Euroconus type
 Adaptador para tubo multicapa tipo Eurocono

219E

Code	Version	Size (D)	Smooth	D1	H	I	L	€	Pack
219E000508		3/4"	●	14X2	-	-	-	2,57	25
219EC00508		3/4"	●	14X2	-	-	-	2,67	25
219E000503		3/4"	●	16X2	-	-	-	2,57	25
219EC00503		3/4"	●	16X2	-	-	-	2,67	25
219E000505		3/4"	●	16X2,25	-	-	-	2,57	25
219EC00505		3/4"	●	16X2,25	-	-	-	2,67	25
219E000506		3/4"	●	17X2	-	-	-	2,57	25
219EC00506		3/4"	●	17X2	-	-	-	2,67	25
219E000509		3/4"	●	18X2	-	-	-	2,57	25
219EC00509		3/4"	●	18X2	-	-	-	2,67	25
219E00050A		3/4"	●	20X2	-	-	-	2,57	25
219EC0050A		3/4"	●	20X2	-	-	-	2,67	25
219E00050C		3/4"	●	20X2,25	-	-	-	2,57	25
219EC0050C		3/4"	●	20X2,25	-	-	-	2,67	25
219E00050M		3/4"	●	20X2,5	-	-	-	2,57	25
219EC0050M		3/4"	●	20X2,5	-	-	-	2,67	25
219E00050R		3/4"	●	20X2,8	-	-	-	2,57	25
219EC0050R		3/4"	●	20X2,8	-	-	-	2,67	25



Adattatore per tubo multistrato
Multilayer pipe adaptor
 Adaptador para tubo multicapa

219X

Code	Version	Size (D)	Smooth	D1	H	I	L	€	Pack
219XN02403		24X19	●	16X2	-	-	-	2,27	25
219XN02409		24X19	●	18X2	-	-	-	2,27	25



Adattatore per tubo multistrato, in ADZ
Multilayer pipe adaptor, DZR brass
 Adaptador para tubo multicapa, de ADZ

219A

Code	Version	Size (D)	Smooth	D1	H	I	L	€	Pack
2190N004A3		1/2"	●	16X2	-	-	-	2,31	50

diametro interno - inner diameter: 15 mm

Adattatori per tubo pex | Pex pipe adaptors

Temperatura d'esercizio / Working temperature: 0°C – 100°C
 Pressione massima d'esercizio / Max working pressure: 10 bar



Adattatore per tubo di Pex
Pex pipe adaptor
 Adaptador para tubo de Pex

220

Code	Version	Size (D)	Smooth	D1	H	I	L	€	Pack
2200000401		1/2"	●	12X2	-	-	-	1,83	50
2200N00401		1/2"	●	12X2	-	-	-	1,89	50
2200000402		1/2"	●	15X2,5	-	-	-	1,83	50
2200N00402		1/2"	●	15X2,5	-	-	-	1,89	50
220000040B		1/2"	●	16X1,8	-	-	-	1,83	50
2200N0040B		1/2"	●	16X1,8	-	-	-	1,89	50
2200000403		1/2"	●	16X2	-	-	-	1,83	50
2200N00403		1/2"	●	16X2	-	-	-	1,89	50
2200000404		1/2"	●	16X2,25	-	-	-	1,83	50
2200N00404		1/2"	●	16X2,25	-	-	-	1,89	50



Adattatore per tubo di Pex tipo Eurocono

Pex pipe adaptor Euroconus type

Adaptador para tubo de Pex tipo Eurocono

220E

Code	Version	Size (D)	Smooth	D1	H	I	L	€	Pack
220E000401		3/4"	●	12X2	-	-	-	2,48	25
220EC00401		3/4"	●	12X2	-	-	-	2,55	25
220E000408		3/4"	●	14X2	-	-	-	2,48	25
220EC00408		3/4"	●	14X2	-	-	-	2,55	25
220E00040W		3/4"	●	15X1,5	-	-	-	2,48	25
220EC0040W		3/4"	●	15X1,5	-	-	-	2,55	25
220E000402		3/4"	●	15X2,5	-	-	-	2,48	25
220EC00402		3/4"	●	15X2,5	-	-	-	2,55	25
220E00040P		3/4"	●	16X1,5	-	-	-	2,48	25
220EC0040P		3/4"	●	16X1,5	-	-	-	2,55	25
220E00040B		3/4"	●	16X1,8	-	-	-	2,48	25
220EC0040B		3/4"	●	16X1,8	-	-	-	2,55	25
220E000403		3/4"	●	16X2	-	-	-	2,48	25
220EC00403		3/4"	●	16X2	-	-	-	2,55	25
220E000406		3/4"	●	17X2	-	-	-	2,48	25
220EC00406		3/4"	●	17X2	-	-	-	2,55	25
220E000409		3/4"	●	18X2	-	-	-	2,48	25
220EC00409		3/4"	●	18X2	-	-	-	2,55	25
220E00040A		3/4"	●	20X2	-	-	-	2,48	25
220EC0040A		3/4"	●	20X2	-	-	-	2,55	25



Adattatore per tubo Pex

Pex pipe adaptor

Adaptador para tubo Pex

220X

Code	Version	Size (D)	Smooth	D1	H	I	L	€	Pack
220XN02403		24X19	●	16X2	-	-	-	2,17	25
220XN02409		24X19	●	18X2	-	-	-	2,17	25
220XN0240N		24X19	●	18X2,5	-	-	-	2,17	25



Adattatore per tubo Pex, in ADZ

Pex pipe adaptor, DZR brass

Adaptador para tubo de Pex, de ADZ

220A

Code	Version	Size (D)	Smooth	D1	H	I	L	€	Pack
2200N004A2		1/2"	●	15X2,5	-	-	-	2,21	50

diametro interno - inner diameter: 15 mm



Raccordi diritti e curvi per radiatori | Straight and elbow couplings for radiators

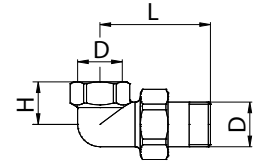
Temperatura d'esercizio / Working temperature: 0°C – 100°C
 Pressione massima d'esercizio / Max working pressure: 10 bar
 Filetti / Threads: ISO 228



Raccordo curvo tre pezzi MF con tenuta senza guarnizione
Three pieces elbow fitting MF with conical sealing
Racor de angulo de tres piezas MH con estanqueidad cónica

415

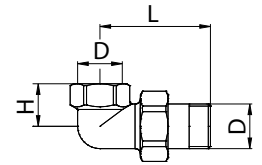
Code	Version	Size (D)	Smooth	D1	H	I	L	€	Pack
4150000300		3/8"	●	-	17	-	45	3,49	30
4150000400		1/2"	●	-	20	-	51	4,08	20
4150000500		3/4"	●	-	24	-	60	6,45	10
4150000600		1"	●	-	33	-	69	11,18	5



Raccordo curvo tre pezzi MF con O-ring in EPDM
Three pieces elbow fitting MF with EPDM O-ring
Racor de angulo de tres piezas MH con O-ring en EPDM

415B

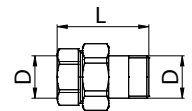
Code	Version	Size (D)	Smooth	D1	H	I	L	€	Pack
415B000300		3/8"	●	-	17	-	45	3,65	30
415BC00300		3/8"	●	-	17	-	45	3,83	30
415B000400		1/2"	●	-	20	-	51	4,07	20
415BC00400		1/2"	●	-	20	-	51	4,25	20
415B000500		3/4"	●	-	24	-	60	6,30	10
415BC00500		3/4"	●	-	24	-	60	6,53	10
415B000600		1"	●	-	33	-	69	10,48	5
415BC00600		1"	●	-	33	-	69	11,00	5
415B000700		1 1/4"	●	-	33	-	72	16,64	4
415B000800		1 1/2"	●	-	41	-	91	31,92	2
415B000900		2"	●	-	69	-	118	56,12	1



Raccordo diritto tre pezzi MF con tenuta senza guarnizione
Three pieces straight fitting MF with conical sealing
Racor recto de tres piezas MH con estanqueidad cónica

416

Code	Version	Size (D)	Smooth	D1	H	I	L	€	Pack
4160000400		1/2"	●	-	-	-	45	3,12	30
4160000500		3/4"	●	-	-	-	53	4,76	15
4160000600		1"	●	-	-	-	59	8,31	10

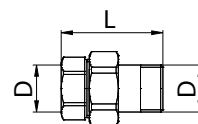




Raccordo diritto tre pezzi
MF con O-ring in EPDM
*Three pieces straight fitting
MF with EPDM O-ring*
*Racor recto de tres piezas
MH con O-ring en EPDM*

416B

Code	Version	Size (D)	Smooth	D1	H	I	L	€	Pack
416B000300		3/8"	●	-	-	-	43	2,92	50
416BC00300		3/8"	●	-	-	-	43	3,05	50
416B000400		1/2"	●	-	-	-	45	2,96	30
416BC00400		1/2"	●	-	-	-	45	3,12	30
416B000500		3/4"	●	-	-	-	53	4,76	15
416BC00500		3/4"	●	-	-	-	53	4,96	15
416B000600		1"	●	-	-	-	59	8,01	10
416BC00600		1"	●	-	-	-	59	8,48	10
416B000700		1 1/4"	●	-	-	-	66	12,64	6
416BC00700		1 1/4"	●	-	-	-	66	13,08	6
416B000800		1 1/2"	●	-	-	-	76	23,26	4
416BC00800		1 1/2"	●	-	-	-	76	24,50	4
416B000900		2"	●	-	-	-	98	42,24	1
416BC00900		2"	●	-	-	-	98	44,16	1



Raccordo MF sede piana
con guarnizione in fibra
*2 pieces male-female
fitting with fiber gasket,
flat seat*
*Racor plano MIH con
junta en fibra*

396P

Code	Version	Size (D)	Smooth	D1	H	I	L	€	Pack
396P050400		3/4" x 1/2"	●	-	-	-	27	1,76	50
396PC50400		3/4" x 1/2"	●	-	-	-	27	1,82	50
396P060500		1" x 3/4"	●	-	-	-	30	3,59	25
396PC60500		1" x 3/4"	●	-	-	-	30	3,68	25
396PC6050G	O-RING	1" x 3/4"	●	-	-	-	30	4,98	25
396P070600		1 1/4" x 1"	●	-	-	-	35	6,15	10
396PC70600		1 1/4" x 1"	●	-	-	-	35	6,40	10



Raccordo FF 2 pezzi
tenuta con guarnizione
in fibra
*2 pieces FF fitting with
fiber gasket, flat seat*
*Racor HH 2 piezas
etancheidad con junta
en fibra*

901

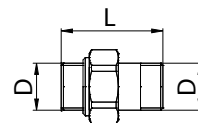
Code	Version	Size (D)	Smooth	D1	H	I	L	€	Pack
9010060400		1" x 1/2"	●	-	-	-	26	3,68	1
9010070500		1 1/4" x 3/4"	●	-	-	-	28	5,70	1
9010080600		1 1/2" x 1"	●	-	-	-	34	7,05	1
9010C80600		1 1/2" x 1"	●	-	-	-	34	7,59	1
9010090700		2" x 1 1/4"	●	-	-	-	37	10,51	1
9010C90700		2" x 1 1/4"	●	-	-	-	37	11,10	1



Raccordo diritto per
termosifone
*Straight coupling for
radiator unit*
*Empalme recto para
radiador*

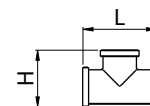
4161

Code	Version	Size (D)	Smooth	D1	H	I	L	€	Pack
4161C0050G		3/4"	●	-	-	-	56	7,78	15
4161C0060G		1"	●	-	-	-	66	10,72	10



Raccordi filettati | Threaded fittings

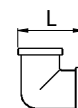
Temperatura d'esercizio / Working temperature: 0°C – 100°C
 Pressione massima d'esercizio / Max working pressure: 10 bar
 Filetti maschio / Male threads: ISO 7/1
 Filetti femmina / Female threads: ISO 228



Raccordo a T femmina
T female fitting
Racor en T hembra

7001

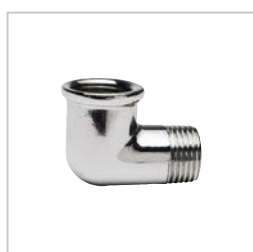
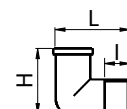
Code	Version	Size (D)	Smooth	D1	H	I	L	€	Pack
070010300C		3/8"	●	-	34	-	44	3,02	20
0700104000		1/2"	●	-	36	-	44	2,66	20
070010400C		1/2"	●	-	36	-	44	2,99	20
0700105000		3/4"	●	-	43	-	52	4,32	10
070010500C		3/4"	●	-	43	-	52	4,90	10
0700106000		1"	●	-	52	-	63	6,98	5
070010600C		1"	●	-	52	-	63	7,86	5
0700107000		1 1/4"	●	-	71	-	90	13,82	5
0700108000		1 1/2"	●	-	76	-	93	19,65	5
0700109000		2"	●	-	87	-	104	25,50	2



Raccordo angolo FF
FF elbow fitting
Racor de angulo HH

7011

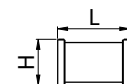
Code	Version	Size (D)	Smooth	D1	H	I	L	€	Pack
070110300C		3/8"	●	-	-	-	31	2,58	30
0701104000		1/2"	●	-	-	-	34	2,10	25
070110400C		1/2"	●	-	-	-	34	2,53	25
0701105000		3/4"	●	-	-	-	40	3,58	20
070110500C		3/4"	●	-	-	-	40	4,12	20
0701106000		1"	●	-	-	-	48	5,56	10
070110600C		1"	●	-	-	-	48	6,17	10
0701107000		1 1/4"	●	-	-	-	70	13,87	5
0701108000		1 1/2"	●	-	-	-	76	16,17	5
0701109000		2"	●	-	-	-	90	36,99	5



Raccordo angolo MF
MF elbow fitting
Racor de angulo MH

7021

Code	Version	Size (D)	Smooth	D1	H	I	L	€	Pack
070210300C		3/8"	●	-	36	10	36	2,63	25
0702104000		1/2"	●	-	34	12	44	2,61	25
070210400C		1/2"	●	-	34	12	44	2,93	25
0702105000		3/4"	●	-	40	13	53	4,51	15
070210500C		3/4"	●	-	40	13	53	5,06	15
0702106000		1"	●	-	54	16	64	6,37	10
070210600C		1"	●	-	54	16	64	6,99	10
0702107000		1 1/4"	●	-	64	16	73	12,99	5
0702108000		1 1/2"	●	-	71	20	81	18,37	5
0702109000		2"	●	-	86	20	96	34,42	2



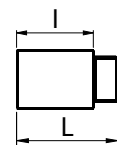
Manicotto FF
FF coupling
Racor recto HH

7041

Code	Version	Size (D)	Smooth	D1	H	I	L	€	Pack
0704104000		1/2"	●	-	26	-	29	1,62	20
070410400C		1/2"	●	-	26	-	29	1,93	20
0704105000		3/4"	●	-	32	-	32	2,22	20
070410500C		3/4"	●	-	32	-	32	2,93	20
0704106000		1"	●	-	40	-	34	3,43	10
070410600C		1"	●	-	40	-	34	4,29	10
0704107000		1 1/4"	●	-	52	-	38	6,99	10
0704108000		1 1/2"	●	-	58	-	42	9,34	10
0704109000		2"	●	-	72	-	58	15,93	5



Prolunga MF
MF extension
Racor recto MH


7652

Code	Version	Size (D)	Smooth	D1	H	I	L	€	Pack
076520310C		3/8"	●	-	-	10	20	1,47	25
0765203150		3/8"	●	-	-	15	25	1,39	25
076520315C		3/8"	●	-	-	15	25	1,66	25
0765203200		3/8"	●	-	-	20	30	1,58	25
076520320C		3/8"	●	-	-	20	30	1,82	25
0765203250		3/8"	●	-	-	25	35	1,77	25
076520325C		3/8"	●	-	-	25	35	2,06	25
0765203300		3/8"	●	-	-	30	40	2,07	25
076520330C		3/8"	●	-	-	30	40	2,36	25
0765203400		3/8"	●	-	-	40	50	2,41	25
076520340C		3/8"	●	-	-	40	50	2,76	25
0765203500		3/8"	●	-	-	50	60	2,94	25
076520350C		3/8"	●	-	-	50	60	3,24	25
0765204100		1/2"	●	-	-	10	21	1,28	50
076520410C		1/2"	●	-	-	10	21	1,54	50
0765204150		1/2"	●	-	-	15	26	1,62	50
076520415C		1/2"	●	-	-	15	26	1,90	50
0765204200		1/2"	●	-	-	20	31	1,93	25
076520420C		1/2"	●	-	-	20	31	2,14	25
0765204250		1/2"	●	-	-	25	36	2,22	25
076520425C		1/2"	●	-	-	25	36	2,46	25
0765204300		1/2"	●	-	-	30	41	2,46	25
076520430C		1/2"	●	-	-	30	41	2,73	25
0765204400		1/2"	●	-	-	40	51	3,12	25
076520440C		1/2"	●	-	-	40	51	3,43	25
0765204500		1/2"	●	-	-	50	61	3,79	10
076520450C		1/2"	●	-	-	50	61	4,03	10
0765204600		1/2"	●	-	-	60	71	4,59	10
076520460C		1/2"	●	-	-	60	71	4,82	10
0765205100		3/4"	●	-	-	10	22	2,02	50
076520510C		3/4"	●	-	-	10	22	2,36	50
0765205150		3/4"	●	-	-	15	27	2,51	25
076520515C		3/4"	●	-	-	15	27	2,73	25
0765205200		3/4"	●	-	-	20	32	2,85	25
076520520C		3/4"	●	-	-	20	32	3,16	25
0765205250		3/4"	●	-	-	25	37	3,27	25
076520525C		3/4"	●	-	-	25	37	3,54	25
0765205300		3/4"	●	-	-	30	42	3,63	25
076520530C		3/4"	●	-	-	30	42	3,92	25
0765205400		3/4"	●	-	-	40	52	4,67	25
076520540C		3/4"	●	-	-	40	52	4,97	25
0765205500		3/4"	●	-	-	50	62	5,39	25
076520550C		3/4"	●	-	-	50	62	5,69	25
0765206100		1"	●	-	-	10	25	4,01	30
076520610C		1"	●	-	-	10	25	4,31	30
0765206150		1"	●	-	-	15	30	4,48	30
076520615C		1"	●	-	-	15	30	4,77	30
0765206200		1"	●	-	-	20	35	4,94	30
076520620C		1"	●	-	-	20	35	5,23	30
0765206250		1"	●	-	-	25	40	5,44	20
076520625C		1"	●	-	-	25	40	5,73	20
0765206300		1"	●	-	-	30	45	5,99	10
076520630C		1"	●	-	-	30	45	6,29	10
0765206400		1"	●	-	-	40	55	6,94	10
076520640C		1"	●	-	-	40	55	7,25	10
0765206500		1"	●	-	-	50	65	7,69	10
076520650C		1"	●	-	-	50	65	8,00	10



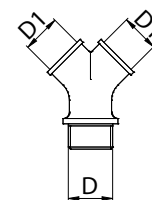
Raccordo 3 vie MF
MF 3 ways union
Racor 3 vias MH



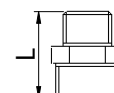
Niplo ridotto MM
MM reduced nipple
Reduccion MM



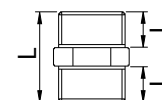
Niplo MM
MM nipple
Racor recto MM


580

Code	Version	Size (D)	Smooth	D1	H	I	L	€	Pack
5800040300		1/2"	●	3/8"	-	-	50	3,46	10
5800040400		1/2"	●	1/2"	-	-	53	6,01	10


7656

Code	Version	Size (D)	Smooth	D1	H	I	L	€	Pack
0765603020		3/8" x 1/4"	●	-	-	-	25	1,06	50
076560302C		3/8" x 1/4"	●	-	-	-	25	1,13	50
0765604020		1/2" x 1/4"	●	-	-	-	25,5	1,11	25
076560402C		1/2" x 1/4"	●	-	-	-	25,5	1,20	25
0765604030		1/2" x 3/8"	●	-	-	-	26,5	1,16	25
076560403C		1/2" x 3/8"	●	-	-	-	26,5	1,26	25
0765605030		3/4" x 3/8"	●	-	-	-	28	2,14	25
076560503C		3/4" x 3/8"	●	-	-	-	28	2,20	25
0765605040		3/4" x 1/2"	●	-	-	-	28,5	1,58	25
076560504C		3/4" x 1/2"	●	-	-	-	28,5	1,77	25
0765606040		1" x 1/2"	●	-	-	-	30,5	2,74	25
076560604C		1" x 1/2"	●	-	-	-	30,5	3,02	25
0765606050		1" x 3/4"	●	-	-	-	31	2,77	25
076560605C		1" x 3/4"	●	-	-	-	31	3,13	25
0765607050		1 1/4" x 3/4"	●	-	-	-	34	6,12	20
0765607060		1 1/4" x 1"	●	-	-	-	34	4,60	15
0765608060		1 1/2" x 1"	●	-	-	-	38	7,62	10
0765608070		1 1/2" x 1 1/4"	●	-	-	-	40	7,72	10
0765609070		2" x 1 1/4"	●	-	-	-	43	11,91	5
0765609080		2" x 1 1/2"	●	-	-	-	43	10,80	5


7657

Code	Version	Size (D)	Smooth	D1	H	I	L	€	Pack
0765702000		1/4"	●	-	-	8,5	22	0,83	50
076570200C		1/4"	●	-	-	8,5	22	1,06	50
0765703000		3/8"	●	-	-	10,5	26	0,91	50
076570300C		3/8"	●	-	-	10,5	26	1,12	50
0765704000		1/2"	●	-	-	11	27	1,06	50
076570400C		1/2"	●	-	-	11	27	1,26	50
0765705000		3/4"	●	-	-	12	29	1,73	50
076570500C		3/4"	●	-	-	12	29	2,02	50
0765706000		1"	●	-	-	12,5	31	2,55	25
076570600C		1"	●	-	-	12,5	31	2,81	25
0765707000		1 1/4"	●	-	-	14	35	4,49	10
0765708000		1 1/2"	●	-	-	16	40	6,00	10
0765709000		2"	●	-	-	17	44	9,35	10



Riduzione
esagonale MF
MF reduced
hexagonal nipple
Reduccion
hexagonal MH


7658

Code	Version	Size (D)	Smooth	D1	H	I	L	€	Pack
076580301C		3/8" x 1/8"	●	-	-	10	15	1,06	50
0765803020		3/8" x 1/4"	●	-	-	10	15	0,77	50
076580302C		3/8" x 1/4"	●	-	-	10	15	0,99	50
0765804020		1/2" x 1/4"	●	-	-	11,5	17	1,09	50
076580402C		1/2" x 1/4"	●	-	-	11,5	17	1,30	50
0765804030		1/2" x 3/8"	●	-	-	11,5	17	0,82	50
076580403C		1/2" x 3/8"	●	-	-	11,5	17	0,93	50
0765805030		3/4" x 3/8"	●	-	-	13	19	1,62	25
076580503C		3/4" x 3/8"	●	-	-	13	19	1,92	25
0765805040		3/4" x 1/2"	●	-	-	13	19	1,23	25
076580504C		3/4" x 1/2"	●	-	-	13	19	1,33	25
0765806030		1" x 3/8"	●	-	-	14	20	2,81	25
076580603C		1" x 3/8"	●	-	-	14	20	3,02	25
0765806040		1" x 1/2"	●	-	-	14	20	2,46	25
076580604C		1" x 1/2"	●	-	-	14	20	2,75	25
0765806050		1" x 3/4"	●	-	-	14	20	1,90	25
076580605C		1" x 3/4"	●	-	-	14	20	2,17	25
0765807040		1 1/4" x 1/2"	●	-	-	16	24	5,22	10
0765807050		1 1/4" x 3/4"	●	-	-	16	24	4,80	25
0765807060		1 1/4" x 1"	●	-	-	16	24	3,37	25
0765808050		1 1/2" x 3/4"	●	-	-	16	24	6,81	10
0765808060		1 1/2" x 1"	●	-	-	16	24	5,73	10
0765808070		1 1/2" x 1 1/4"	●	-	-	16	25	4,34	10
0765809060		2" x 1"	●	-	-	18	27,5	13,85	5
0765809070		2" x 1 1/4"	●	-	-	18	27,5	12,69	10
0765809080		2" x 1 1/2"	●	-	-	18	27,5	10,61	10



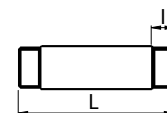
Tappo maschio
Male plug
Tapon macho


231A

Code	Version	Size (D)	Smooth	D1	H	I	L	€	Pack
231A000300		3/8"	●	-	-	9,5	14	0,67	50
231AC00300		3/8"	●	-	-	9,5	14	0,79	50
231A000400		1/2"	●	-	-	11	16	0,75	50
231AC00400		1/2"	●	-	-	11	16	0,93	50
231A000500		3/4"	●	-	-	12	17	1,23	50
231AC00500		3/4"	●	-	-	12	17	1,55	50
231A000600		1"	●	-	-	13	19,5	2,64	50
231AC00600		1"	●	-	-	13	19,5	3,01	50
231A000700		1 1/4"	●	-	-	14	25	4,90	10
231A000800		1 1/2"	●	-	-	12,5	24	6,72	10
231A000900		2"	●	-	-	18	30,5	9,65	10



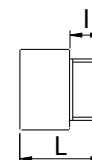
Prolunga MM
MM extension
Extension MM


7648

Code	Version	Size (D)	Smooth	D1	H	I	L	€	Pack
0764804400		1/2"	●	-	-	10	40	2,26	25
0764804500		1/2"	●	-	-	14,5	50	2,55	25
0764804600		1/2"	●	-	-	14,5	60	2,65	20
0764804750		1/2"	●	-	-	14,5	75	3,06	20
0764804800		1/2"	●	-	-	14,5	80	3,32	10
0764804A10		1/2"	●	-	-	14,5	100	3,75	10
0764804B10		1/2"	●	-	-	14,5	150	5,45	10
0764804A20		1/2"	●	-	-	14,5	200	7,08	10
0764805500		3/4"	●	-	-	14,5	50	3,09	10
0764805600		3/4"	●	-	-	14,5	60	3,54	10
0764805750		3/4"	●	-	-	14,5	75	4,38	10
0764805800		3/4"	●	-	-	14,5	80	4,61	10
0764805A10		3/4"	●	-	-	14,5	100	5,34	10
0764805B10		3/4"	●	-	-	14,5	150	7,85	10
0764805A20		3/4"	●	-	-	14,5	200	10,33	10
0764806500		1"	●	-	-	12,5	50	4,28	10
0764806600		1"	●	-	-	16,5	60	5,00	10
0764806750		1"	●	-	-	16,5	75	6,46	10
0764806A10		1"	●	-	-	16,5	100	7,84	5
0764806B10		1"	●	-	-	16,5	150	11,59	5
0764806A20		1"	●	-	-	16,5	200	15,35	5



Riduzione FM
FM reducer
Reduccion HM


7661

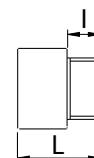
Code	Version	Size (D)	Smooth	D1	H	I	L	€	Pack
0766103020		3/8" x 1/4"	●	-	-	10	22	1,40	50
076610302C		3/8" x 1/4"	●	-	-	10	22	1,56	50
0766104020		1/2" x 1/4"	●	-	-	10	22	1,42	50
076610402C		1/2" x 1/4"	●	-	-	10	22	1,68	50
0766104030		1/2" x 3/8"	●	-	-	10	22	1,44	50
076610403C		1/2" x 3/8"	●	-	-	10	22	1,55	50
0766105040		3/4" x 1/2"	●	-	-	10	22	1,63	50
076610504C		3/4" x 1/2"	●	-	-	10	22	1,86	50
0766106040		1" x 1/2"	●	-	-	10	25	2,74	25
076610604C		1" x 1/2"	●	-	-	10	25	3,07	25
0766106050		1" x 3/4"	●	-	-	11	26	2,85	25
076610605C		1" x 3/4"	●	-	-	11	26	3,26	25
0766107060		1 1/4" x 1"	●	-	-	12	28,5	3,83	10
076610706C		1 1/4" x 1"	●	-	-	12	28,5	3,91	10
0766108060		1 1/2" x 1"	●	-	-	16	31,5	7,60	10



Ghiera filettata
Threaded tailpiece
Reduccion

7659

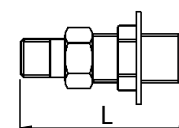
Code	Version	Size (D)	Smooth	D1	H	I	L	€	Pack
0765904030		1/2" x 3/8"	●	-	-	-	10	0,65	50
076590403C		1/2" x 3/8"	●	-	-	-	10	0,83	50
0765905040		3/4" x 1/2"	●	-	-	-	11	0,86	50
076590504C		3/4" x 1/2"	●	-	-	-	11	1,06	50
0765906050		1" x 3/4"	●	-	-	-	12,5	1,36	50
076590605C		1" x 3/4"	●	-	-	-	12,5	1,57	50



Manicotto ridotto
Reduced coupling
Enganche reducido

7675

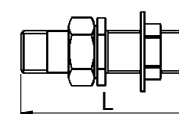
Code	Version	Size (D)	Smooth	D1	H	I	L	€	Pack
0767504030		1/2" x 3/8"	●	-	-	12	25	1,67	30
076750403C		1/2" x 3/8"	●	-	-	12	25	1,76	30
0767505040		3/4" x 1/2"	●	-	-	15	30	2,29	20
076750504C		3/4" x 1/2"	●	-	-	15	30	2,40	20
0767506040		1" x 1/2"	●	-	-	16	31	3,22	20
076750604C		1" x 1/2"	●	-	-	16	31	3,38	20
0767506050		1" x 3/4"	●	-	-	16	32	3,25	25
076750605C		1" x 3/4"	●	-	-	16	32	3,42	25
0767507040		1 1/4" x 1/2"	●	-	-	19	37,5	7,60	10
0767507050		1 1/4" x 3/4"	●	-	-	19	37,5	7,36	10
0767507060		1 1/4" x 1"	●	-	-	19	37,5	6,26	10



Raccordo a cassone
con piletta
Connector for
reservoir with waste
Racor de inflexion
con drenar

7680

Code	Version	Size (D)	Smooth	D1	H	I	L	€	Pack
0768004000		1/2"	●	-	-	-	66	8,08	20
0768005000		3/4"	●	-	-	-	81	9,92	20
0768006000		1"	●	-	-	-	86	13,09	15
0768007000		1 1/4"	●	-	-	-	94	17,93	5



Raccordo a cassone
prolungato
Straight connector
for reservoir
Racor de inflexion
prolongado

7690

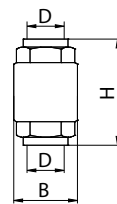
Code	Version	Size (D)	Smooth	D1	H	I	L	€	Pack
0769004000		1/2"	●	-	-	-	81	7,61	24
0769005000		3/4"	●	-	-	-	88	9,99	15
0769006000		1"	●	-	-	-	93	14,08	10
0769007000		1 1/4"	●	-	-	-	94	19,83	4
0769008000		1 1/2"	●	-	-	-	94	25,29	3
0769009000		2"	●	-	-	-	110	31,42	2

Valvole di ritegno e filtri | Check valves and filters

Temperatura d'esercizio / Working temperature: 0-100°C

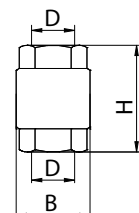
Corpo in ottone / Body in brass

Filetti / Threads: ISO 228


 Valvola di ritegno PN25,
tenuta in acciaio inox

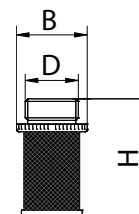
*Brass check valve PN25,
plate in stainless steel*
*Válvula de retención
PN25, junta de acero
inoxidable*
442

Code	Version	Size (D)	Smooth	D1	H	I	L	€	Pack
4420000300		3/8"	●	-	55	-	34	6,95	10
4420000400		1/2"	●	-	58	-	34	6,99	10
4420000500		3/4"	●	-	65	-	42	9,52	8
4420000600		1"	●	-	74	-	48	12,92	6
4420000700		1 1/4"	●	-	83	-	60	20,54	4
4420000800		1 1/2"	●	-	93	-	71	27,75	4
4420000900		2"	●	-	101	-	87	42,58	2
4420001000		2 1/2"	●	-	122	-	120	98,23	1
4420001100		3"	●	-	141	-	140	148,23	1
4420001200		4"	●	-	158	-	172	246,45	1


 Valvola di ritegno PN12,
tenuta in polimero

*Brass check valve PN12,
plate in polymer*
*Válvula de retención
PN12, junta de polimero*
442Y

Code	Version	Size (D)	Smooth	D1	H	I	L	€	Pack
442Y000400		1/2"	●	-	47	-	34	5,09	10
442Y000500		3/4"	●	-	53	-	42	7,04	8
442Y000600		1"	●	-	60	-	47	9,02	8
442Y000700		1 1/4"	●	-	66	-	59	13,39	6
442Y000800		1 1/2"	●	-	74	-	71	19,72	4
442Y000900		2"	●	-	80	-	86	27,45	2
442Y001000		2 1/2"	●	-	98	-	102	50,92	1
442Y001100		3"	●	-	103	-	125	72,23	1
442Y001200		4"	●	-	118	-	154	126,90	1

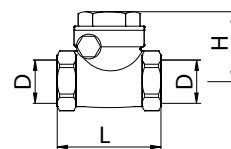

 Filtro per valvola di
ritegno

*Filter for brass check
valve*
*Filtro para válvula de
retención*
444

Code	Version	Size (D)	Smooth	D1	H	I	L	€	Pack
4440000300		3/8"	●	-	42	-	25	1,13	30
4440000400		1/2"	●	-	47	-	29	1,15	50
4440000500		3/4"	●	-	57	-	36	1,31	20
4440000600		1"	●	-	69	-	43	1,52	20
4440000700		1 1/4"	●	-	75	-	50	1,97	12
4440000800		1 1/2"	●	-	83	-	56	2,46	12
4440000900		2"	●	-	98	-	69	3,31	6
4440001000		2 1/2"	●	-	123	-	86	6,26	1
4440001100		3"	●	-	138	-	102	7,57	1
4440001200		4"	●	-	152	-	129	10,29	1



Valvola clapet con battente in ottone e tenuta in NBR
Swing check valve with plate in brass and NBR seat
Válvula clapet con clapeta de laton y junta de NBR



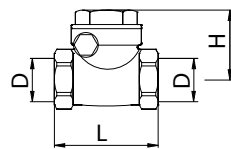
439

Code	Version	Size (D)	Smooth	D1	H	I	L	€	Pack
4390000400		1/2"	●	-	50	-	44	6,70	16
4390000500		3/4"	●	-	58	-	53	9,33	12
4390000600		1"	●	-	67	-	63	14,17	8
4390000700		1 1/4"	●	-	77	-	72	20,67	5
4390000800		1 1/2"	●	-	88	-	82	26,68	4
4390000900		2"	●	-	101	-	95	37,58	2

Temperatura d'esercizio / Working temperature: 0-90°C



Valvola clapet con battente in ottone e tenuta metallica
Swing check valve with plate in brass and metal seat
Válvula clapet con clapeta de laton y junta de metal



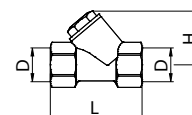
439M

Code	Version	Size (D)	Smooth	D1	H	I	L	€	Pack
439M000400		1/2"	●	-	50	-	44	6,90	16
439M000500		3/4"	●	-	58	-	53	9,60	12
439M000600		1"	●	-	67	-	63	14,60	8
439M000700		1 1/4"	●	-	77	-	72	21,38	5
439M000800		1 1/2"	●	-	88	-	82	27,54	4
439M000900		2"	●	-	101	-	95	39,46	2
4390001000		2 1/2"	●	-	130	-	119	76,26	1
4390001100		3"	●	-	150	-	133	106,01	1
4390001200		4"	●	-	185	-	168	196,87	1

Temperatura d'esercizio / Working temperature: 0-90°C



Filtro inclinato pesante PN20 con tappo di ispezione e filtro in acciaio inox
Heavy strainer PN20, inspection plug and stainless steel filter
Filtro inclinado pesado PN20 con tapon de inspeccion y filtro de acero inoxidable



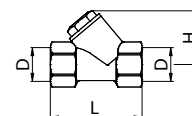
459

Code	Version	Size (D)	Smooth	D1	H	I	L	€	Pack
4590000400		1/2"	●	-	40	-	58	4,81	20
4590000500		3/4"	●	-	50	-	70	7,78	10
4590000600		1"	●	-	60	-	87	12,14	6
4590000700		1 1/4"	●	-	68	-	96	19,62	6
4590000800		1 1/2"	●	-	75	-	106	24,87	4
4590000900		2"	●	-	90	-	126	41,15	2

Grado di filtrazione / Filtration degree: 400 µm (1/2" - 3/4" - 1")
Grado di filtrazione / Filtration degree: 500 µm (1 1/4" - 1 1/2" - 2")



Filtro inclinato PN20 con tappo di ispezione e filtro in acciaio inox
Strainer valve PN20, inspection plug and stainless steel filter
Filtro inclinado PN20 con tapon de inspeccion y filtro de acero inoxidable



459B

Code	Version	Size (D)	Smooth	D1	H	I	L	€	Pack
459B000500		3/4"	●	-	45	-	65	6,92	12
459B000600		1"	●	-	52	-	78	10,81	8

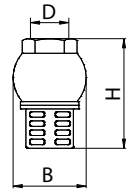
Grado di filtrazione / Filtration degree: 400 µm



Valvola di fondo con tenuta in ottone

Foot valve with plate in brass

Válvula de fondo con junta de latón


441

Code	Version	Size (D)	Smooth	D1	H	I	L	€	Pack
4410000400		1/2"	●	-	60	-	39	7,24	20
4410000500		3/4"	●	-	69	-	45	8,26	12
4410000600		1"	●	-	80	-	51	9,95	12
4410000700		1 1/4"	●	-	92	-	61	14,39	5
4410000800		1 1/2"	●	-	100	-	68	18,98	3
4410000900		2"	●	-	117	-	80	27,49	2
4410001000		2 1/2"	●	-	140	-	100	49,39	1
4410001100		3"	●	-	173	-	121	66,32	1
4410001200		4"	●	-	194	-	145	112,70	1

Temperatura d'esercizio / Working temperature: 0-90°C

Rubinetto di scarico | Drain ball valves

Temperatura d'esercizio / Working temperature: 0-70°C

Pressione massima d'esercizio / Max working pressure: 16bar

Corpo in ottone / Body in brass

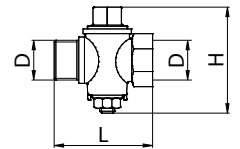
Filetti / Threads: ISO 228



Rubinetto MF con quadro

Square head MF cock

Llave MH con cabeza cuadrada


476

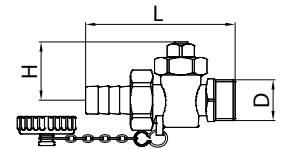
Code	Version	Size (D)	Smooth	D1	H	I	L	€	Pack
4760000700		1 1/4"	●	-	91	-	82	17,55	1



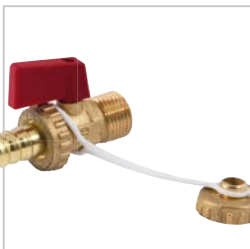
Rubinetto scarico caldaia con tappo e portagomma

Drain cock for boiler with cap and hose connection

Llave de evacuación caldera con tapón y conexión para tubo de goma


476C

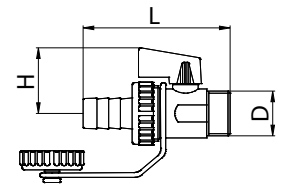
Code	Version	Size (D)	Smooth	D1	H	I	L	€	Pack
476C000300		3/8"	●	-	28	-	74	6,17	1
476C000400		1/2"	●	-	31	-	76	6,48	1
476C000500		3/4"	●	-	38	-	91	11,79	1



Rubinetto a sfera scarico caldaia con tappo e portagomma

Drain ball valve for boiler with cap and hose connection

Llave de bola evacuación caldera con tapón y conexión para tubo de goma


476S

Code	Version	Size (D)	Smooth	D1	H	I	L	€	Pack
476S000300		3/8"	●	-	35	-	65	5,89	1
476S000400		1/2"	●	-	35	-	65	5,89	1